

AGA KHAN UNIVERSITY EXAMINATION BOARD

SECONDARY SCHOOL CERTIFICATE

CLASS X EXAMINATION

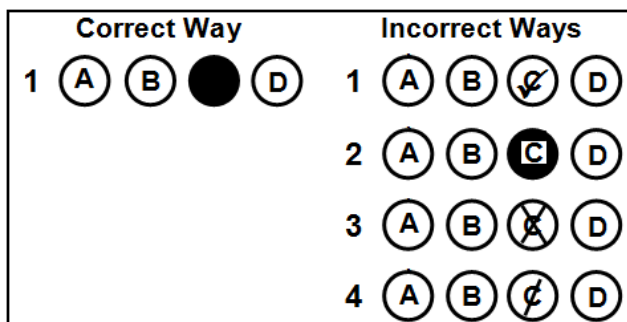
APRIL/ MAY 2018

Pakistan Studies Paper I

Time: 30 minutes Marks: 20

INSTRUCTIONS

1. Read each question carefully.
2. Answer the questions on the separate answer sheet provided. DO NOT write your answers on the question paper.
3. There are 100 answer numbers on the answer sheet. Use answer numbers 1 to 20 only.
4. In each question there are four choices A, B, C, D. Choose ONE. On the answer grid black out the circle for your choice with a pencil as shown below.



Candidate's Signature

5. If you want to change your answer, ERASE the first answer completely with a rubber, before blacking out a new circle.
6. DO NOT write anything in the answer grid. The computer only records what is in the circles.

1. The major export partner of Pakistan in the year 2014-2015 was

- A. China.
- B. Germany.
- C. United Kingdom.
- D. United States of America.

2. Furqan is an industrialist who deals with textiles. He exports cotton towels to United States of America and United Kingdom. His trade volume is about US \$ 50,000 per month.

The mode of transportation suitable for this trade will be

- A. airways.
- B. seaways.
- C. railways.
- D. roadways.

3. In winters, International School in Islamabad had to suspend its outdoor activities of children due to the increase in smog which might result in health disorders.

The leading cause of smog in the vicinity of Islamabad is due to the

- A. presence of brick kiln industries.
- B. cutting of trees in huge numbers.
- C. increase in the number of motor vehicles.
- D. burning of the residue of crop by local farmers.

4. Farhan lives in a village in Sindh which is known for its handiwork and craftsmanship. He has opened a set up where he employs the locals to work, pays them well for their services, and sells the goods not only in the local but in international markets as well.

This step of Farhan would help in reducing

- A. child labour.
- B. employment ratio.
- C. rural urban migration.
- D. average income of the villagers.

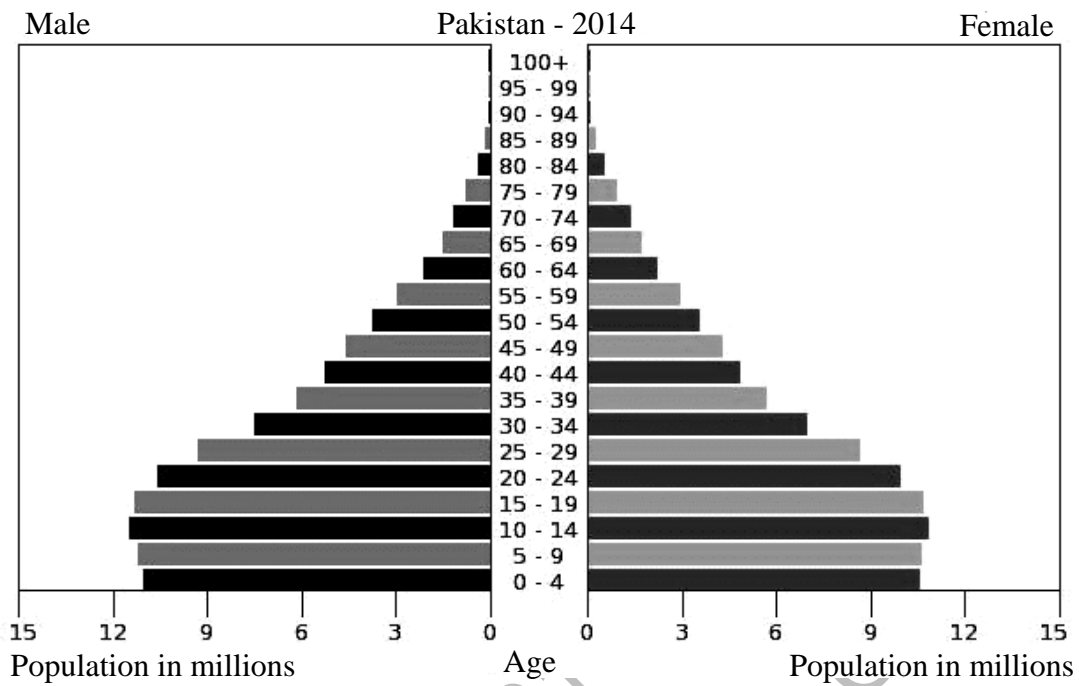
5. "In Pakistan, 10.9 percent of population is between the ages of 0-4 years and 21.2 percent is between 5-14 years. Population composition of the country is saturated towards working age population as 61.4 percent of population is falling in the age group 15-59".

(Economic Survey of Pakistan 2016-17)

The given statistic means that, in order to maximise economic development, the government has to spend on the development of

- A. roads and infrastructure.
- B. hospitals and old age homes.
- C. schools and vocational institutes.
- D. radio and telecommunication sector.

6.



According to the given population pyramid, which of the following age groups has the highest number of people?

- A. 0-14
 - B. 15-29
 - C. 30-40
 - D. 40-60
7. In the 1980s, Pakistan's skilled work force moved to the Middle Eastern countries in search of better job opportunities and high standard of living.

The given movement of population from Pakistan is an example of

- A. emigration.
- B. immigration.
- C. rural to urban migration.
- D. urban to urban migration.

8. The increase in population results in multiple effects including

- I. environmental degradation.
- II. burden on housing facilities.
- III. unstable law and order situation.
- IV. more allocation of developmental funds.

In 1979, Pakistan allowed huge numbers of Afghan Refugees to settle in Pakistan. This settlement continued for several years. What were the negative effects of this migration?

- A. I and II
- B. II and IV
- C. I, II and III
- D. I, III and IV

9. Indian National Congress resigned from provincial governments on December 22, 1939 because

- A. Viceroy had increased the voting rights of the minorities.
- B. Viceroy had declared India's involvement in World War II.
- C. All India Muslim League had started protests against the congress rule.
- D. British crown had granted weightage to the Muslims in the central legislature.

10. Jinnah's reason for not accepting the proposals of the Simla Conference 1945 was that the

- A. Viceroy had the veto power over all decisions.
- B. Legislative Council had the power of defence and revenue only.
- C. interim government had the power of the demarcation of boundaries.
- D. Executive Council had equal number of Hindus and Muslim Leaders.

11. Punjab boundary commission, headed by Sir Cyril Radcliffe, led to water dispute between India and Pakistan.

One of the MOST controversial decisions of the Punjab boundary commission was the allotment of

- A. Ferozpur district to India.
- B. Jalandhar district to India.
- C. Gurdaspur district to India.
- D. Hoshiarpur district to India.

12. The imposition of first Martial Law in 1958 in Pakistan was ordered by

- A. General Zia-ul-Haq.
- B. General Ayub Khan.
- C. General Yahya Khan.
- D. General Iskandar Mirza.

13. The rivers that became the part of Pakistan in accordance to Indus Basin Treaty are
- A. Sutlej, Beas, Indus.
 - B. Jhelum, Indus, Beas.
 - C. Chenab, Sutlej, Indus.
 - D. Chenab, Jhelum, Indus.
14. The major dissatisfaction in terms of East Pakistan's economy during 1968-69 was
- A. the earning from the trade of jute was used in West Pakistan.
 - B. the green revolution had increased the agricultural produce in West Pakistan.
 - C. government expenditure on defence to protect the western borders from India increased.
 - D. equal opportunities of employment in civil and military services were given to East and West Pakistan.
15. Devolution is the legal delegation of powers from the central government of a sovereign state to local or regional governments. This aims at all of the following EXCEPT
- A. cultural decentralisation.
 - B. political decentralisation.
 - C. economical decentralisation.
 - D. administrative decentralisation.
16. Which of the following is celebrated as the harvest festival in Punjab?
- A. Basant
 - B. Baisakhi
 - C. Lok Mela
 - D. Mela Chiraghan
17. All of the following are problems caused by class differences and social inequalities in the society EXCEPT rise in
- A. crime.
 - B. unemployment.
 - C. political unrest.
 - D. urban to rural migration.
18. The inclusion of different types of people in a group or organisation would promote
- A. diversity.
 - B. cohesion.
 - C. disparity.
 - D. homogeneity.

19. Which of the following countries is the member of South Asian Association for Regional Cooperation (SAARC)?

- A. Iran
- B. Iraq
- C. Tajikistan
- D. Afghanistan

20. Many Pakistani scholars have completed their education through the Fulbright Scholarship programme.

Which of the following countries is offering Fulbright Scholarships?

- A. China
- B. Saudi Arabia
- C. United Arab Emirates
- D. United States of America

AKU-EB May 2018
for
Teaching & Learning Only

Please use this page for rough work

AKU-EB May 2018
for
Teaching & Learning Only

Please use this page for rough work

AKU-EB May 2018
for
Teaching & Learning Only