

AGA KHAN UNIVERSITY EXAMINATION BOARD

SECONDARY SCHOOL CERTIFICATE

CLASS X

ANNUAL EXAMINATIONS (THEORY) 2025

Biology Paper II

Time: 1 hour 50 minutes Marks: 25

INSTRUCTIONS

Please read the following instructions carefully.

1. Check your name and school information. Sign if it is accurate.

**I agree that this is my name and school.
Candidate's Signature**

RUBRIC

2. There are SIX questions. Answer ALL questions. Questions 5 and 6 each offer TWO choices. Attempt any ONE choice from each.
3. When answering the questions:

Read each question carefully.
Use a black pointer to write your answers. DO NOT write your answers in pencil.
Use a black pencil for diagrams. DO NOT use coloured pencils.
DO NOT use staples, paper clips, glue, correcting fluid or ink erasers.
Complete your answer in the allocated space only. DO NOT write outside the answer box.
4. The marks for the questions are shown in brackets ().
5. You may use a simple calculator if you wish.

Q.1. (Total 3 Marks)

Mention any THREE points of significance of mitosis in plants.

Q.2. (Total 4 Marks)

a. How is the composition of blood maintained by the following functions of nephron in the human kidney?

- Secretion (1 Mark)

- Reabsorption (1 Mark)

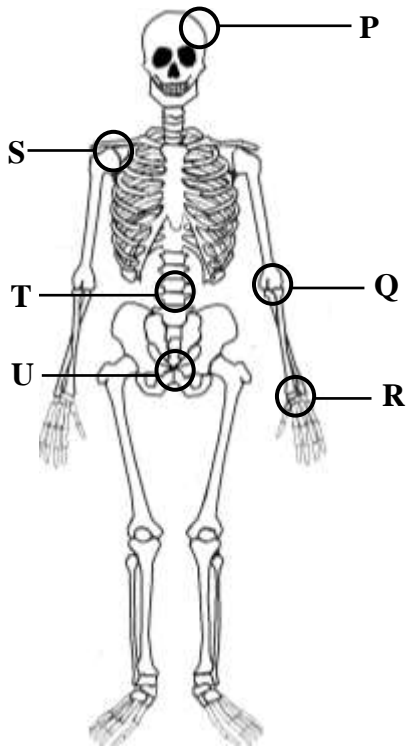
b. Describe any TWO adaptive features of human skin to maintain body temperature during a cold day. (2 Marks)

Q.3.

(Total 3 Marks)

Based on the given diagram of the human skeleton, identify any ONE labelled part from each type of joint in the table.

(Note: You do NOT need to write the actual name of the joint.)



Type of Joint	Labelled Part
Immovable	
Freely moveable	
Slightly moveable	

PLEASE TURN OVER THE PAGE

Q.4.

(Total 3 Marks)

In pea plants, allele (R) for round seed shape is dominant over allele (r) for wrinkled and allele (Y) for yellow seed colour is dominant over allele (y) for green seed colour.

A cross between a homozygous round and yellow seeded plant and a homozygous wrinkled and green seeded plant produces 100% heterozygous round and yellow seeds in its F1 generation.

Illustrate the genetic cross between the offspring produced in F1 generation in the given box.

Space for genetic cross

Annual Examinations 2025
AKU-EB
for Teaching & Learning only

Please use this page for rough work

AKU-EB
Annual Examinations 2025
for Teaching & Learning only

Please use this page for rough work

AKU-EB
Annual Examinations 2025
for Teaching & Learning only